



**CisoLube**  
LUBRICATION SYSTEM

SOLVE YOUR NEEDS WITH SERVICES

# LubeStar Hydraulic Pump



2024 V1.0

LUBESTAR  
ELECTRIC PUMP

[www.cisolube.com](http://www.cisolube.com)  
Yantai CISO Lubrication Technology Co.,Ltd  
Tel:+86 400-800-9400

## LubeStar High Performance Hydraulic Pump

The high-performance LubeStar hydraulic pump combines a rotary drive pump motor and reciprocating pump lines with flexible control functions to operate in hot deserts and cold Arctic temperatures. The integrated control unit regulates the lubricant quantity and operating pressure. The pump output can be adjusted from 115 to 737 cm<sup>3</sup>/min.



### Features

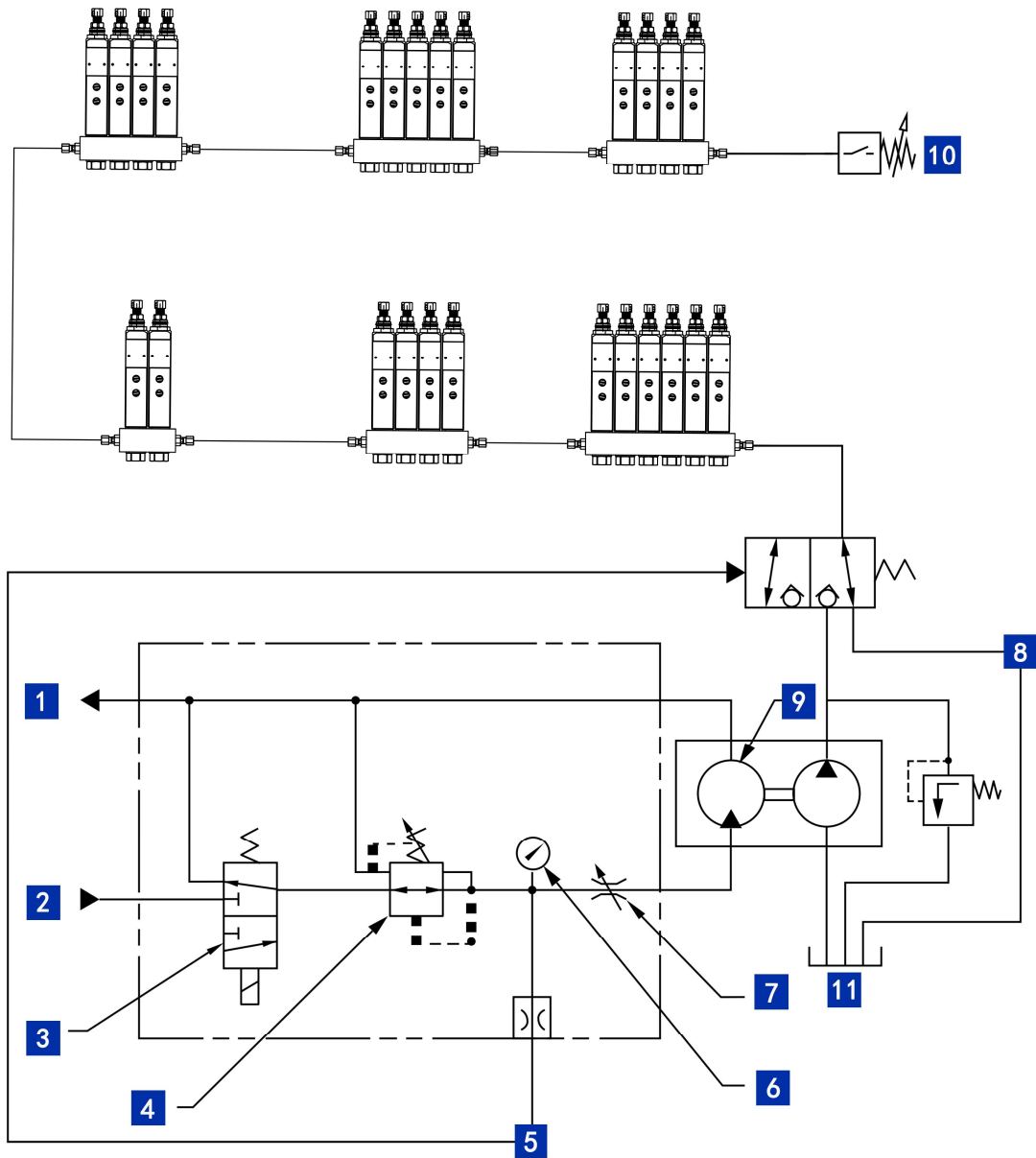
- Extends pump life and simplifies pump installation, operation and service
- Pump and tank combination models with automatic level sensor and direct shut-off system
- The preferred pump for single-line parallel lubrication systems
- Flexible range with options for pump only or pump and tank with follow-up high and low level detection
- Suitable for hot deserts and cold climates

### Applications

- Construction machinery
- Mining machinery and mining vehicles
- Metallurgy
- Steel mills
- Paper mills
- Food and beverages
- .....

Technical Data	
Functional principle	Hydraulic piston pump
No. of output Port	1
Adjustable flowrate	Max. 737 cm <sup>3</sup> /min Min. 115 in <sup>3</sup> /min
Supply inlet pressure	Max. 200Bar
Operating inlet pressure	20~32 Bar
Operating temperature	-29°C ~ 65°C
Solenoid valve coil	24VDC
Tank capacity	16、 27、 41、 51、 180 kg
Output Port	1/4NPTF
Installation Method	vertical
Material	Fluororubber, polyurethane, steel, aluminum-zinc castings

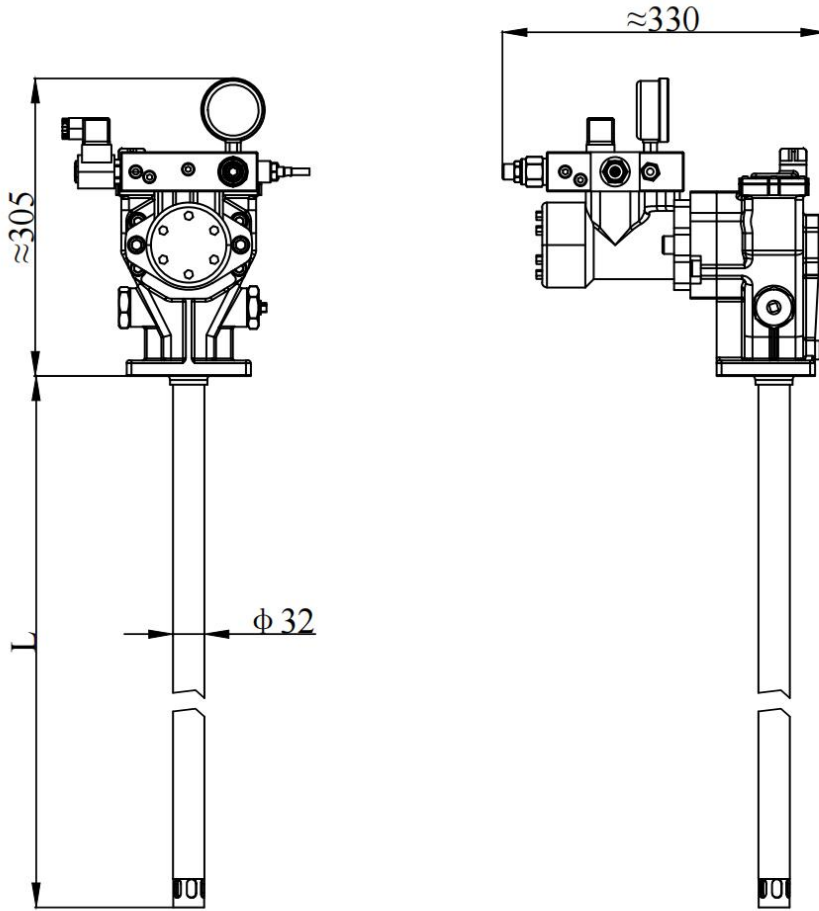
Hydraulic schematic diagram



- |   |                       |    |                          |
|---|-----------------------|----|--------------------------|
| 1 | Hydraulic return line | 7  | Flow control valve       |
| 2 | Hydraulic inlet       | 8  | Hydraulic inlet          |
| 3 | Solenoid valve        | 9  | Hydraulic motor          |
| 4 | Relief valve          | 10 | Terminal pressure switch |
| 5 | Safety valve          | 11 | Tank                     |
| 6 | Pressure gage         |    |                          |

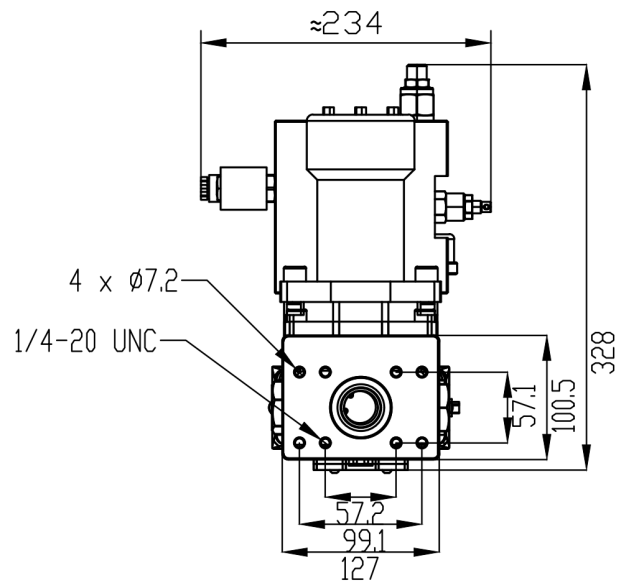
**Dimension (mm)**

Bare pump without tank dimension

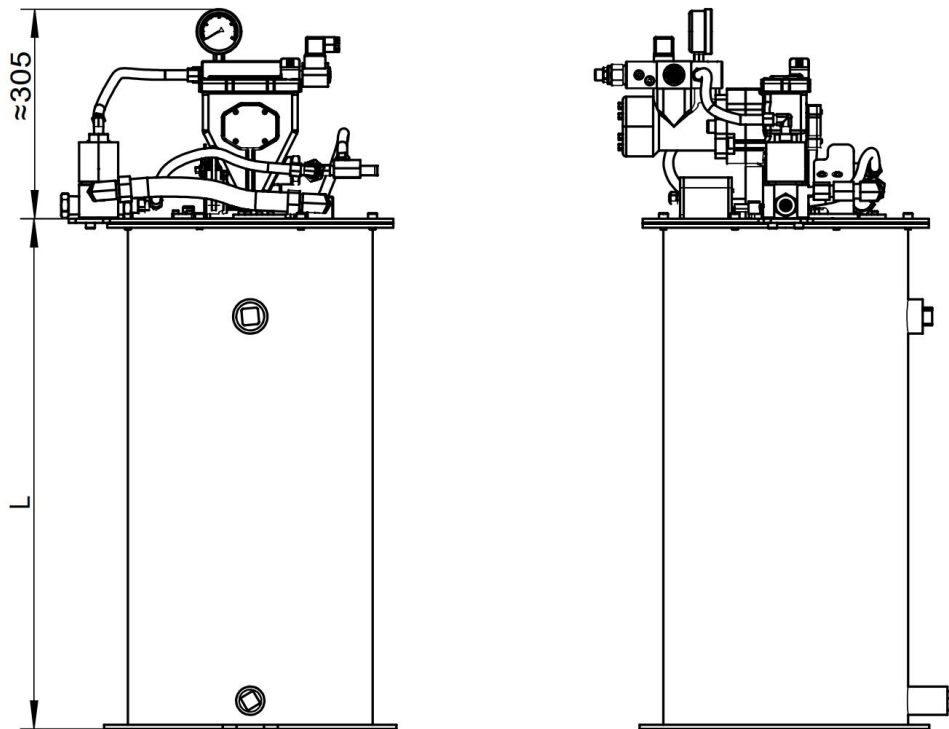


Installation Dimension

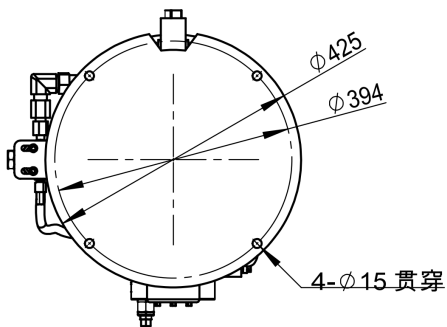
Capacity	L
16KG	348
27KG	483
41KG	699
180KG	864



Dimension with tank

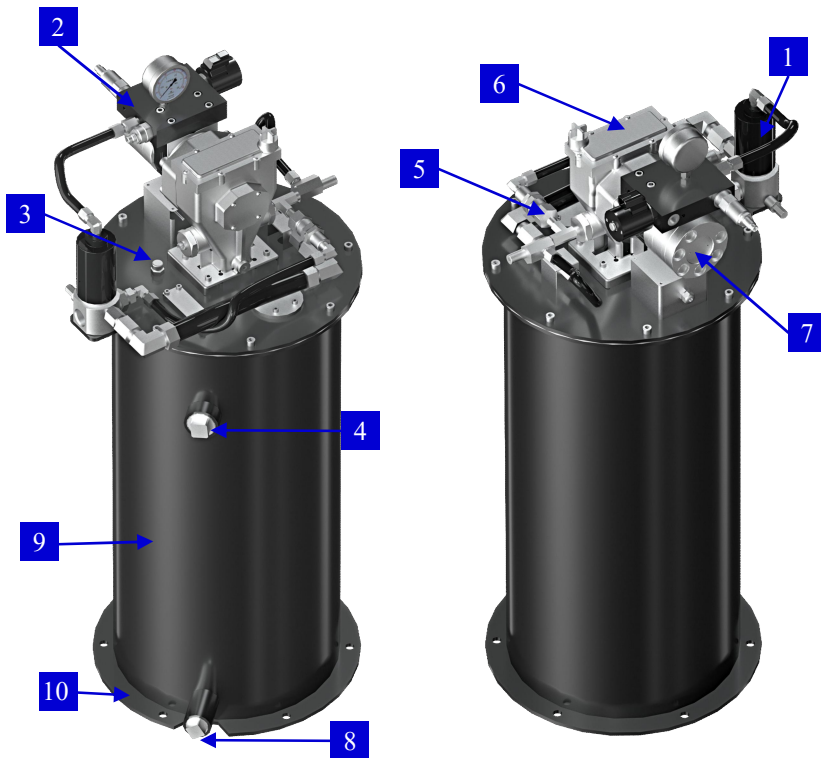


Installation Dimension



Capacity	L
27KG	508
41KG	724

## Product components



1	Pressure relief valve
2	Hydraulic control valve block
3	Vent cap
4	overflow port
5	non-return valve
6	Pump body
7	Hydraulic motor
8	Grease filling port
9	Pump tank
10	Fixing plate

## Ordering information:

Model	Description	Capacity	Manual pressure regulating valve	Adjustable flow control	Adjustable pressure control
LS722	Pump and tank, with follower plate and low level	27KG	-	√	√
LS723	Pump and tank	27KG	-	-	-
LS725	Pump and tank, with follower plate and low level	41KG	-	√	√
LS726	Pump and tank	41KG	√	-	-
LS727	Pump and tank, with follower plate and low level	54KG	-	√	√
LS731	Bare pump	16KG	-	√	√
LS732	Bare pump	27KG	-	√	√
LS733	Bare pump	41/55KG	-	√	√
LS734	Bare pump	180KG	-	√	√
LS735	Bare pump	27KG	-	-	-
LS741	Bare pump	27KG	√	-	-
4LS742	Bare pump	41/55KG	√	-	-

Tank



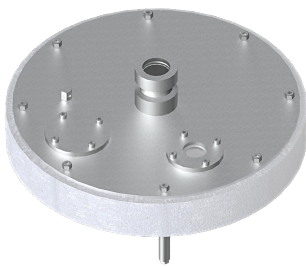
Part No.	KG	Description
LS0027	27	Tank kits
LS0041	41	Tank kits

Drum cover is supplied with bolts, vent cap, gasket and eyebolts.

Tank assembly ordering code includes complete drum cover.

Level sensor and follower plate must be ordered separately.

Follower plate



Part No.	KG
LS1004	27/41

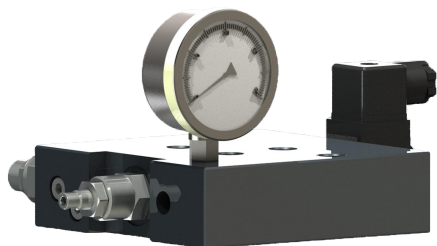
Relief valve



Part No.
LS1006



Hydraulic control valve block

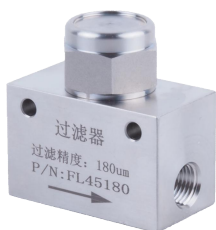


Part No.

LS1007

The control pipeline and motor are integrated.  
 The oil inlet pressure shall not exceed 32 bar.  
 The control device is equipped with a solenoid valve, a pressure control valve, a flow regulating valve and a pressure gauge.

Filter



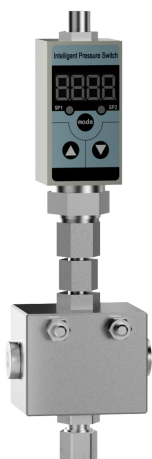
Part No.	Accuracy	Internal thread
FL45180	180µm	M10*1
FL45125	125µm	M10*1

Safety valve



Part No.	Description	Internal thread
5FI07	275bar/4000psi	NPT1/8

Pressure switch

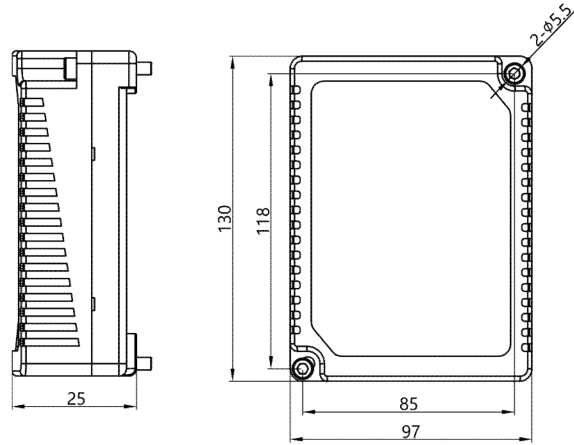


Part No.	Description
EPW-S	Pressure switch assembly
Part No.	Description
EPW-S1	Single pressure switch
Part No.	Description
EPW-S2	Installation block

Controller

Part No.

MC-II-A



# CISO

LUBRICATION SYSTEM

**Yantai Ciso Lubrication Technology Co.,Ltd**

No. 41, Bosina Road, High-tech Zone, Yantai City, Shandong Province

Tel: +86 400-800-9400



MADE IN CHINA



[www.cisolube.com](http://www.cisolube.com)