



**CisoLube**  
LUBRICATION SYSTEM

SOLVE YOUR NEEDS WITH SERVICES

# LubeStar Electric Pump



2024 V1.0

LUBESTAR  
ELECTRIC PUMP

[www.cisolube.com](http://www.cisolube.com)  
Yantai CISO Lubrication Technology Co.,Ltd  
Tel:+86 400-800-9400

# LubeStar High Performance Electric Pump

Compact and versatile, it has a unique rotary drive and modular gear configuration, allowing you to adjust the output speed of the pump motor to suit your different applications. Lubestar pumps can be connected to 12/24 V DC, and the motion generated by the motor rotation is converted into reciprocating motion of the pump, providing efficient lubricant flow. The use of efficient brushless motors, high torque output, low noise, can ensure the pump stable output of lubricant at high pressure.

The higher displacement is particularly suitable for single-line lubrication systems or dual-line lubrication systems.

Therefore, the pump is very compact and can be installed almost anywhere.



## Features

- Brushless DC motor
- Various sizes available
- Temperature and overload protection, durable.
- Stable pressure, smooth output
- Protection level: IP65
- Suitable for medium and large lubrication systems

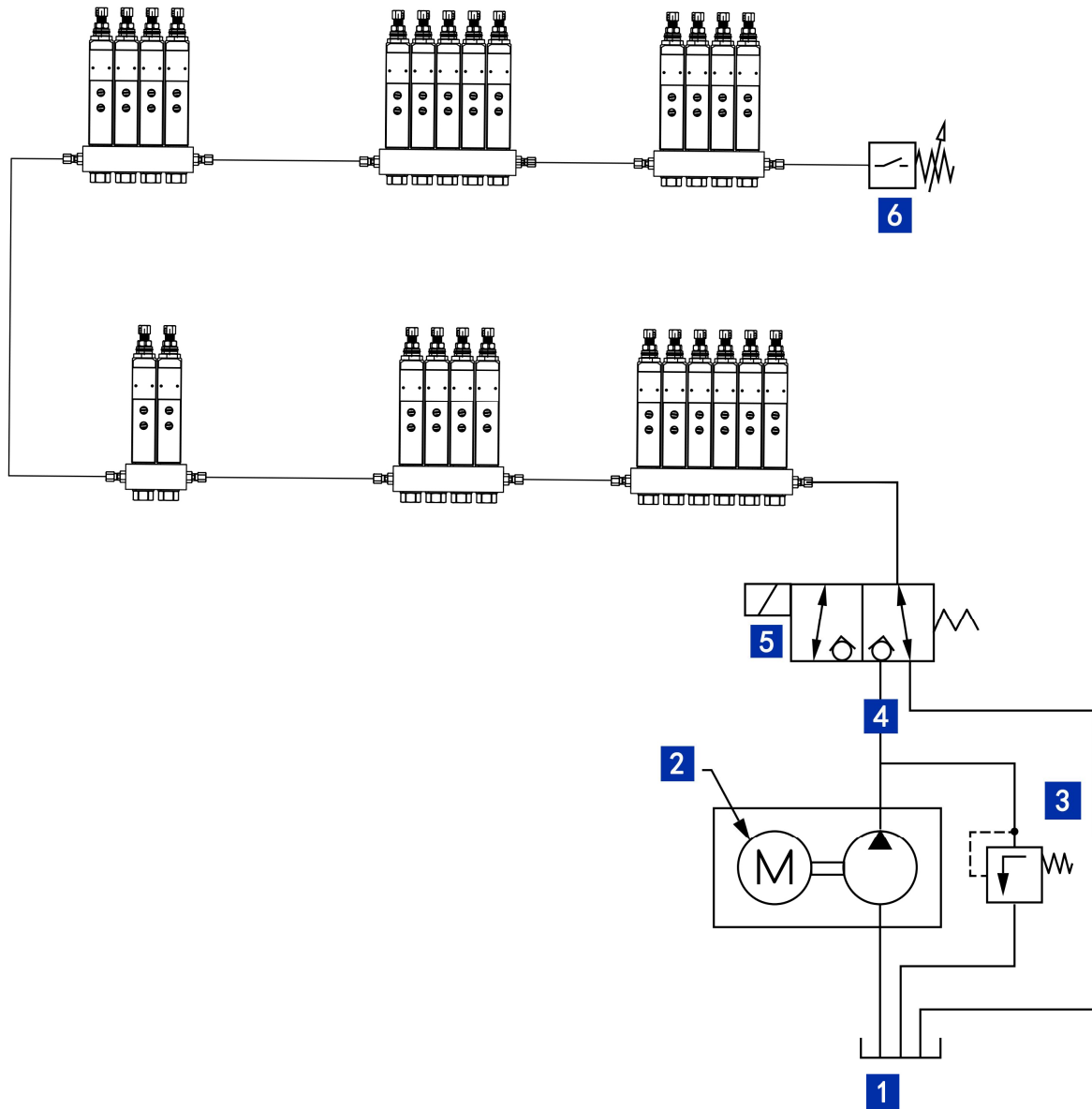
## Applications

- Construction machinery
- Mining machinery and mining vehicles
- Metallurgy
- Steel mills
- Paper mills
- Food and beverage

.....

Technical Data	
Functional principle	Electric piston pump
No. of output Port	1
Adjustable flowrate	Max. 103 cm <sup>3</sup> /min
Max. operating pressure	Max. 345Bar
Operating temperature	-40°C ~ 65°C
Voltage	24VDC
Maximum current	9.6A
Tank capacity	27、 41、 180KG
Output Port	1/4NPTF
Ratio	19:1
Rated Power	200W
Installation Method	Vertical
Material	Fluororubber, polyurethane, steel, aluminum-
Solenoid Valve Data	
Maximum flow capacity	7gpm (26.5L/min)
Maximum working pressure	350bar
Switching frequency (max)	15000 cyc/h
Installation torque	20~25 lbf ft (27~34 N-m)
Viscosity Range	2.8~380cSt
Rated response time	50ms

## Electric schematic diagram



1 Tank

4 Lubricant outlet

2 Electric motor

5 Solenoid valve

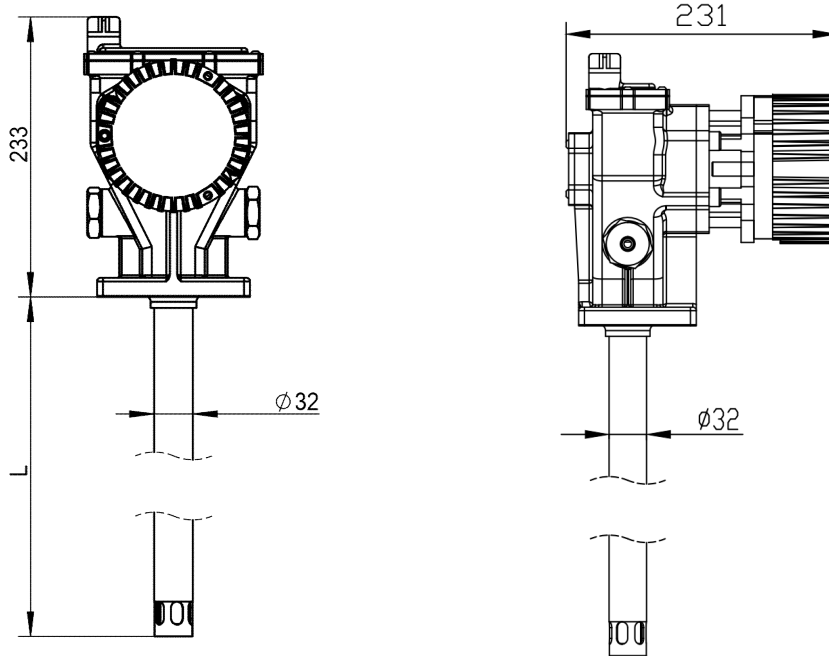
3 Safety valve

6 Terminal pressure switch

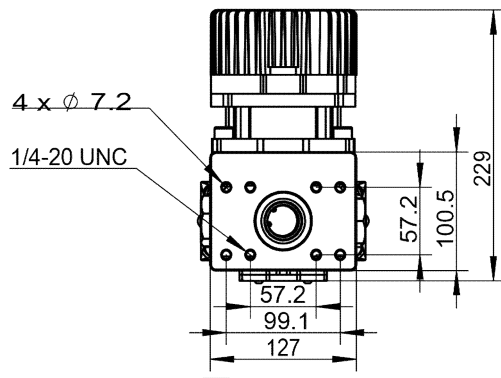


**Dimension (mm)**

Bare pump without tank dimension

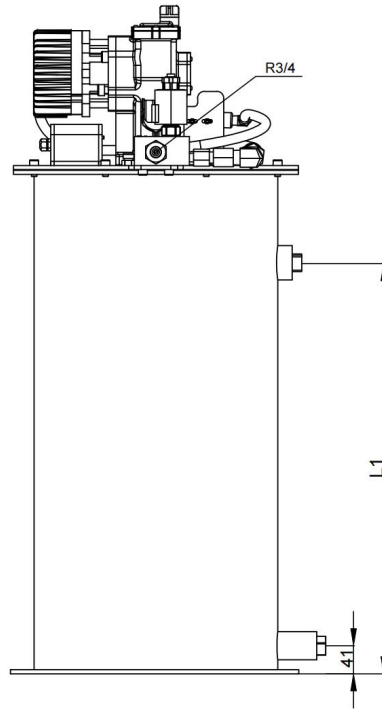
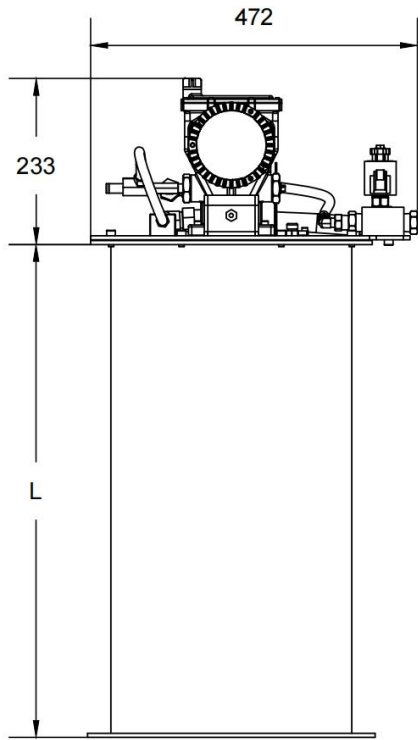


**Installation Dimension**

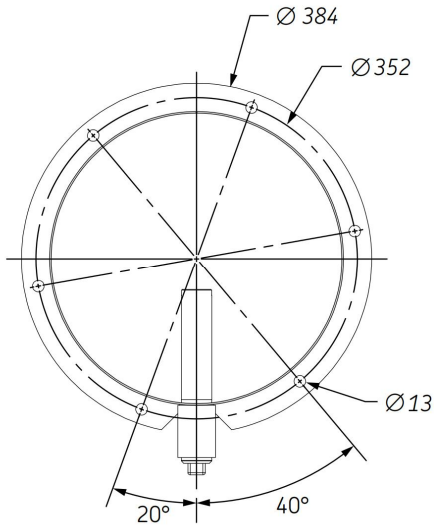


Capacity	L
16KG	348
27KG	483
41/55KG	699
180KG	864

Dimension with tank



Installation Dimension



Capacity	L	L1
27KG	508	430
41KG	724	646

## Ordering information:

Model	Description	Voltage	Capacity	Ratio	Max. operating pressure
ES479	Pump with follower plate and drum cover	24V	16KG	9:1	170bar
ES728	Pump with tank	24V	27KG	19:1	345bar
ES729	Pump with tank	24V	41KG	19:1	345bar
ES730	Pump with tank	24V	55KG	19:1	345bar
ES736	Bare pump	24V	16KG	19:1	345bar
ES737	Bare pump	24V	27KG	19:1	345bar
ES738	Bare pump	24V	41/55KG	19:1	345bar
ES739	Pump with follower plate and drum cover	24V	180KG	9:1	170bar

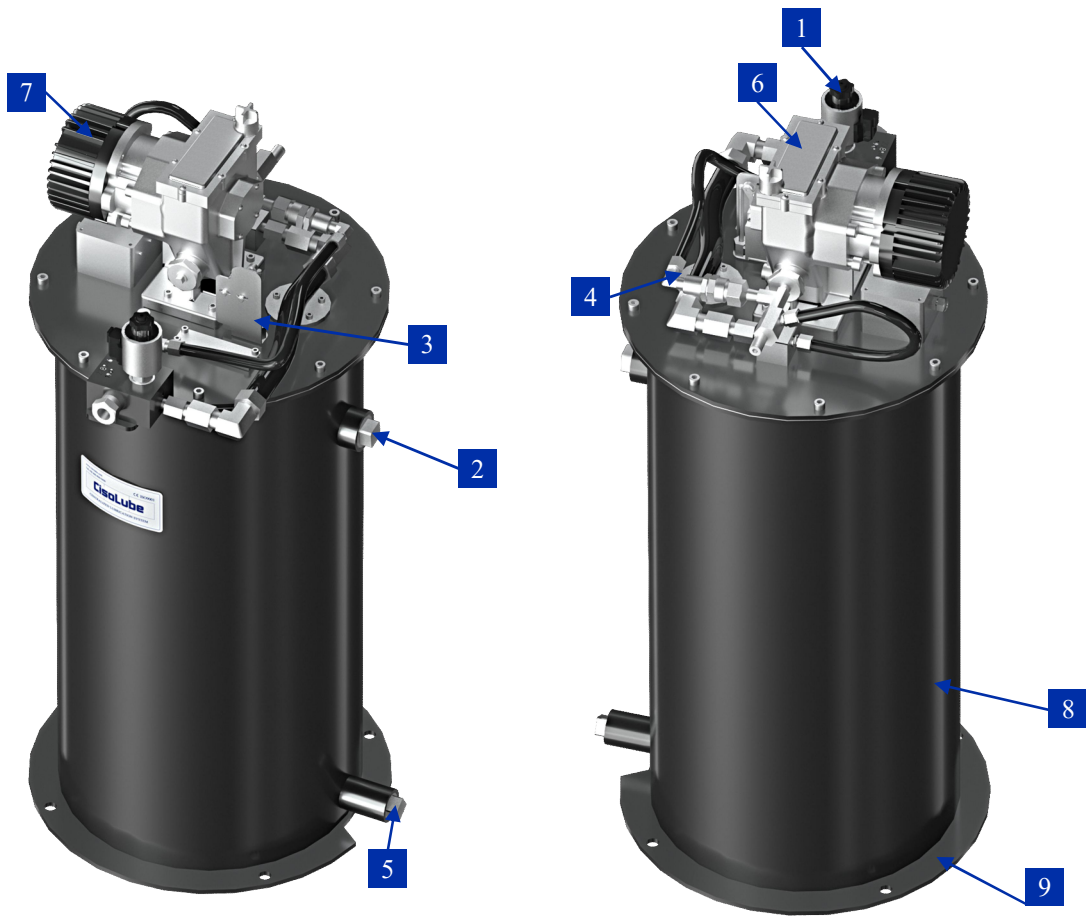


Bare pump



Pump with tank

Product components



1 Safety valve

4 Vent port

7 Motor

2 Overflow port

5 Grease filling port

8 Pump tank

3 Low level

6 Pump body

9 Fixed plate



Tank



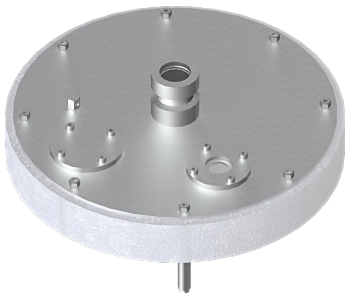
Part No.	KG	Description
LS0027	27	Tank kits
LS0041	41	Tank kits

Tank assembly ordering code includes complete drum cover.

Drum cover comes complete with bolts, vent cap, gasket and eyebolts.

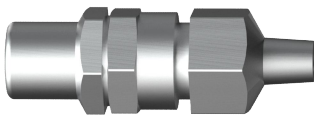
Level sensor and follower plate must be ordered separately.

Follower plate



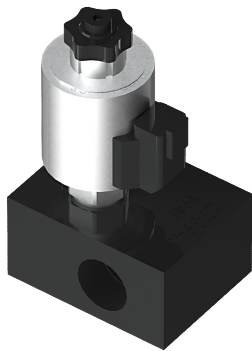
Part No.	KG
LS1004	27/41

Outlet check valve assembly



Part No.
LS1005

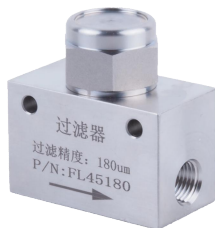
Solenoid release valve



Part No.

LS1001

Filter



Part No.

Precision

Thread F

FL45180

180µm

M10\*1

FL45125

125µm

M10\*1

Safety valve

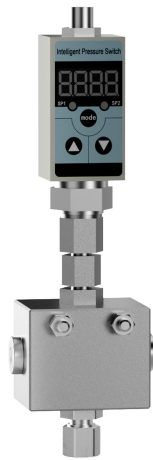


Part No.

5FI10

The lubrication pump is equipped with a safety valve as standard with 200-350bar.

Pressure switch



Part No.

Description

EPW-S

Pressure switch kits

Part No.

Description

EPW-S1

Single pressure switch

Part No.

Description

EPW-S2

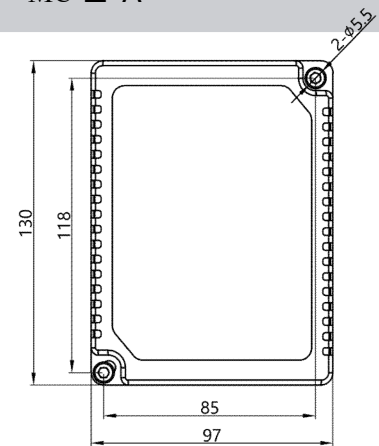
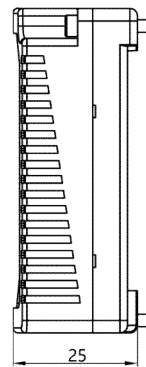
Installation block

Controller



Part No.

MC-II-A





# CISO

LUBRICATION SYSTEM

**Yantai Ciso Lubrication Technology Co.,Ltd**

No. 41, Bosina Road, High-tech Zone, Yantai City, Shandong Province

Tel: +86 400-800-9400



MADE IN CHINA



[www.cisolube.com](http://www.cisolube.com)